

Icetips Checkbox Fixer

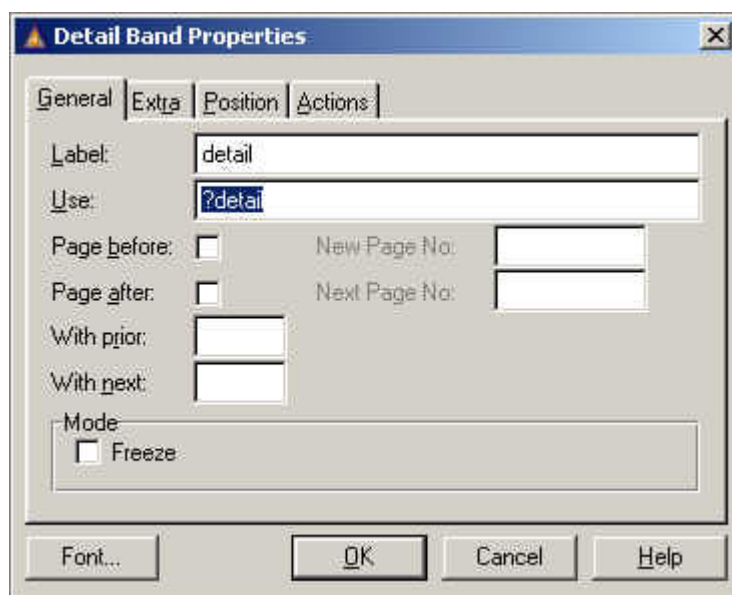
Version 1.002

Added options to make the template compatible with Clarion 4 and Clarion5.

In order for the Checkbox Fixer to work with Clarion 4 and Clarion 5, there are certain things that must be done.

1. The details in the report must have a use variable
2. The checkboxes and their relative parent detail must be selected individually

Setting a use variable for the detail



Setting the detail use variable

Select the detail where you have checkbox controls on. Right click on the detail or the detail header (the gray band above the detail band) and select Properties from the menu. Make sure that you are changing the properties for the detail, not any of the controls on the detail.

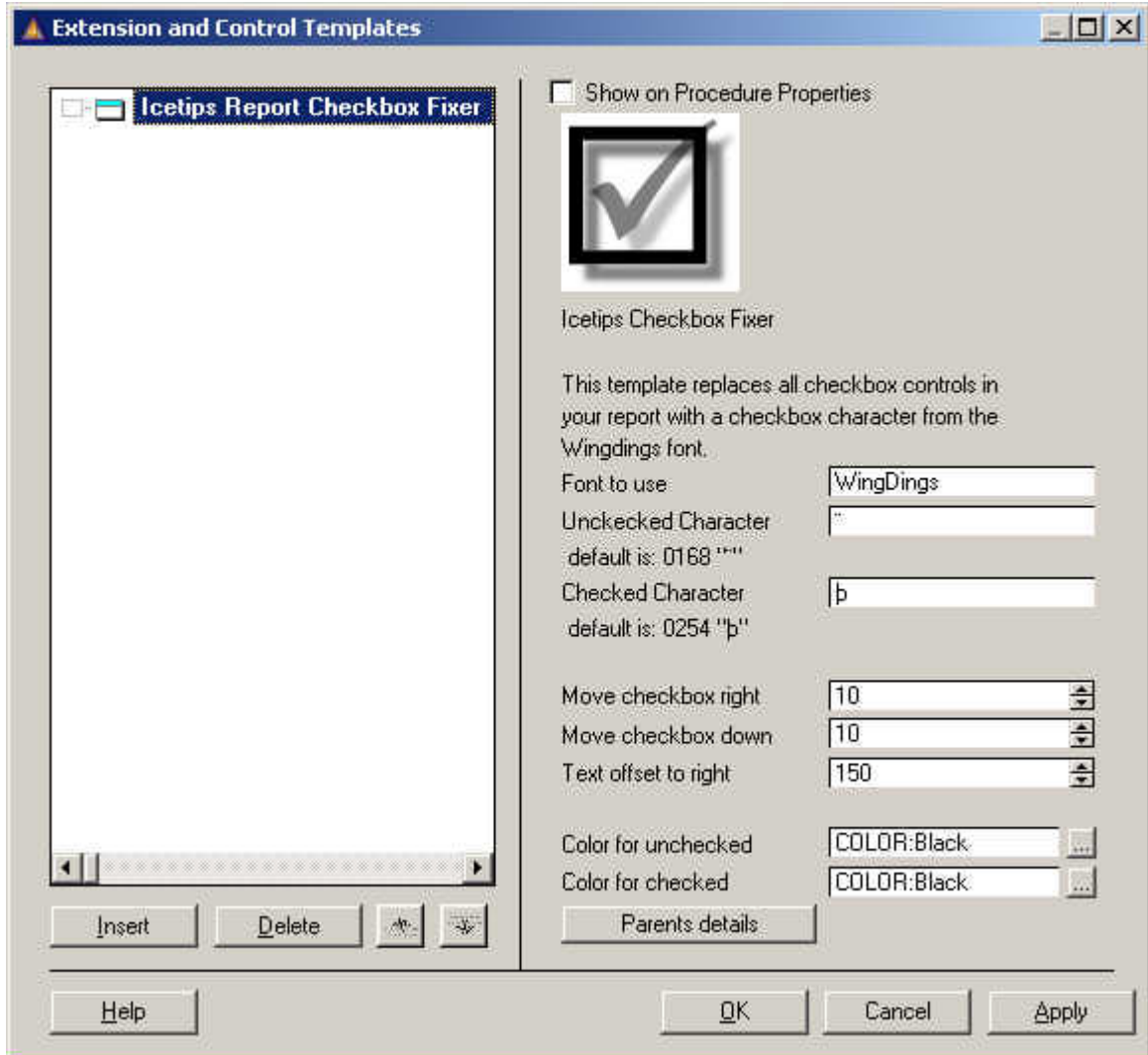
Place the cursor in the Use field and type in a label to use, prefixed with a question mark, example ?Detail. Good way to do this is to copy

the Label of the detail to the Use field and simply prefix it with a question mark. Note that the use variable obeys the same rules as labels, i.e. no spaces, special characters, etc.

Selecting the parent details

In Clarion 4 and Clarion 5 there was a bug that prevents you from creating controls at runtime unless you specify which detail it is supposed to be created on. In Clarion 5.5 this is not a problem because the Prop:Parent works correctly there.

So in order for you to be able to use this templates in Clarion 4 and Clarino 5, you must select the checkbox controls and specify the parent detail for them. If you have many checkboxes on many different details, the best way would probably be to note down which checkbox is on which detail or generate the report and look at the generated code while you are doing this.

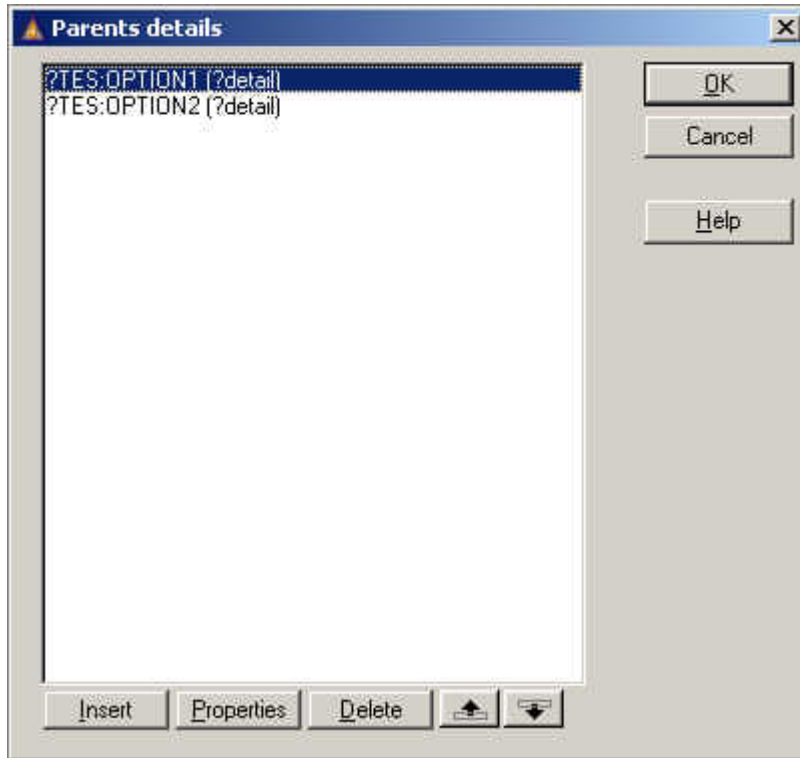


Applying the Checkbox Fixer template in Clarion 4

Note that the Parents detail button is disabled in Clarion 5.5 and only enabled in Clarion 4 and Clarion 5.

Click on the Parents details button and then add ALL the checkboxes that you want fixed and select the appropriate details. Note that if the detail does not show up in the drop down it is because it does not have a use variable defined and you need to go back to step one.

Each and every checkbox must be entered in this way. Checkboxes that are not added through this method will simply not be changed. The pictures below demonstrate how this is done.



Two checkboxes added and detail selected



Selecting checkbox and detail